



#### PRODUCT FEATURES:

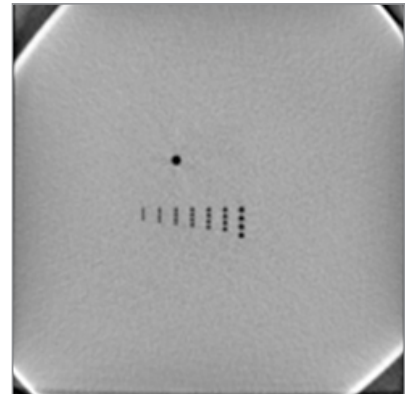
- Complies with DIN 6868-150
- Test cone beam functionality

## RaySafe P 3D Fluoro Phantom

The RaySafe P 3D Fluoro is used to test the cone beam functionality of fluoroscopic X-ray systems.

The supported tests include:

- Spatial resolution
- Homogeneity
- Noise and artefacts



#### TECHNICAL DATA

Product No. 4712527

- Dimensions: 120x20x60 mm (4.72x4.72x2.36 lbs)
- Weight: 1.0 kg (2.2 lbs)
- Material: PMMA, 3 plates glued together where the inner plate holds drillings for spatial resolution tests with  $\varnothing$  0.50, 0.60, 0.70, 0.80, 0.90, 1.00, and 1.30 mm (0.020, 0.024, 0.028, 0.031, 0.035, 0.039, and 0.051 in.)
- One extra drilling  $\varnothing$  2.5 mm (0.098 in.) through all 3 plates
- Delivered in a hard case